

# New England HOME

Celebrating Fine Design, Architecture, and Building

Gorgeous Grays Make a Chic High-Rise Home

A South End Townhouse Mingles Past And Present

PLUS: ANTIQUES FOR MODERN LIFE AND THE JOY OF MIXING PATTERNS

## The New Boston

Diverse, cosmopolitan, yet still historic, the city shows its changing face.



## Pauli & Uribe Architects

Two diverse architects. One dynamic partnership. She is Monika Zofia Pauli. He is Juan Guillermo Uribe Rubio. Together, the principals of Pauli & Uribe Architects are affectionately known by their clients as "Juanika". That moniker characterizes the relationship the firm established and maintains with friends and associates. The duo's high-touch approach is a natural fit for their discerning clientele and bespoke properties.

Specializing in historically correct projects showcases their attention to detail and ability to handle challenging designs. While a passion for perfection draws on classical forms, modern ideas are integrated where appropriate. "We're inspired by what the original architects had in mind," notes Pauli. The firm's hand-drawn renderings, rich with texture and dimension, are based on a timeless and ancient tradition, often forgotten in recent times. "Clients see their homes come to life in ways the most sophisticated software cannot match," enthuses Uribe. No technophobes, the firm's savvy team embraces the latest design software, but never chases technology for its own sake.

With a prestigious client list that reads like a Who's Who of Boston's old guard and up-and-comers, their trajectory continues upward. Recent successes include the restoration and renovation of historic 19th-century townhouses on Louisburg Square, the Ritz Carlton House, a residence at One Commonwealth Avenue; and new residences in the suburbs and beyond.

Despite their demanding pace, Pauli and Uribe still find time to serve on numerous civic and cultural advisory boards-- including Bina Farm and Cambridge Historical Commission--allowing them to give back to the community.



BEACON HILL BOW-FRONT TOWNHOUSE



TUDOR STYLE ADDITION



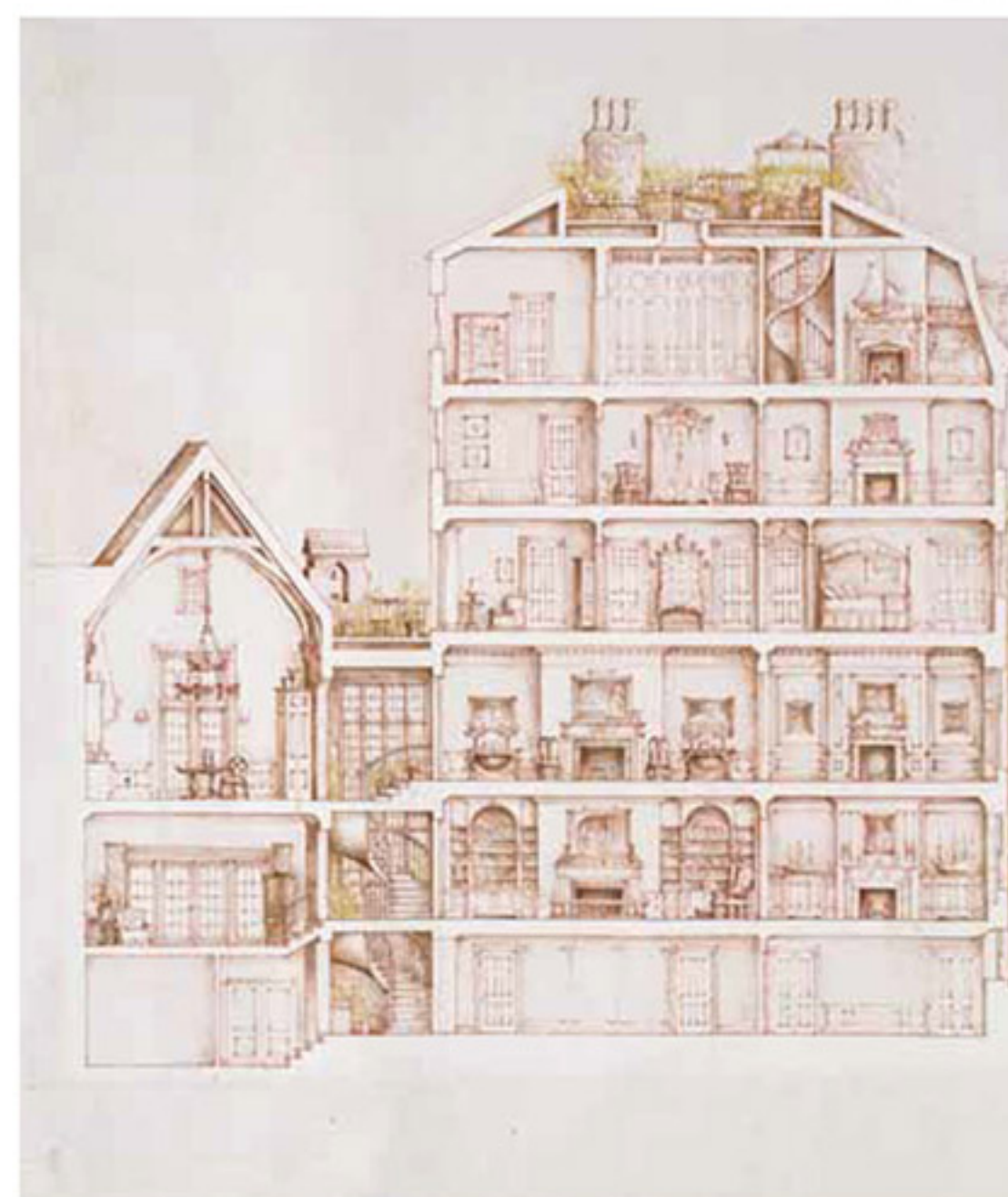
PAULI & URIBE ARCHITECTS LLC

Classic Architecture Interior Design

Pauli & Uribe Architects LLC  
121 Mount Vernon Street  
Boston, MA 02108  
pauli-uribe.com  
(617) 227-0954



FEDERAL STYLE SPIRAL STAIR



LOUISBURG TOWNHOUSE

January-February 2015  
\$5.95US \$6.95CAN  
02  
74470 02556  
Display until March 16, 2015  
NEHOMEMAG.COM